

Single Classes

The Daily Life of a General Surgeon

Topics include robotic surgery, the growing list of outpatient surgical procedures, sympathy and empathy, Medicare and Medicare Advantage plans, and business aspects of medical practice, with lots of time for questions and open discussion. Tuesday, March 5, 1:15 - 2:45 Peter Jarvis retired general surgeon



Hearing in Noise

Communicating in noisy environments is universally difficult, although some listeners fare better than others. This class highlights recent scientific discoveries relating to hearing in noisy environments, including strategies for improving hearing acuity.

Wednesday, March 13, 1:15 - 2:45 Erika Skoe, Assistant Professor, Dept of Speech, Language, and Hearing Sciences, UConn



The Food Waste Epidemic

One of the greatest challenges

facing the world will be how to feed Earth's anticipated 9 billion people in 2050. Reducing the level of waste (40% of U.S. food production) is one way to help accomplish this. This talk focuses on the environmental impacts of food waste and the global/national perspective.

Thursday, March 14, 1:15 - 2:45 Cameron Faustman, Interim Dean, UConn College of Agriculture, Health and Natural Resources

What Acupuncture Can Do for You

Struggling with a medical condition? Tired of being on medications? Ever wondered about acupuncture? Learn how acupuncture treats a variety of ailments, such as nerve issues, anxiety, digestion, stress, hormones, infertility, pain, sinus, even weight loss, to name a few.

Tuesday, March 19, 1:15 - 2:45 Nicole Smith, L.Ac., of the Pampered Porcupine Acupuncture, Scotland, CT

Religious "Others" in Christian Contexts

What is "interfaith"? What does it add to seminary education, and what are its limits?

Wednesday, March 20, 1:15 - 2:45 Amy Lawton, Graduate Student, UConn Sociology Department



An Overview of Hearing Loss

This talk discusses communication strategies and available technologies helpful for people with hearing loss.

Thursday, March 21, 1:15 - 2:45 Randy Kirsch, Moderator, Hearing Loss Association, Eastern CT Chapter

Using Positive Psychology to Promote Cardiovascular Health within the African-American Community: A Meta-Analysis

African-Americans experience better outcomes if CVD awareness, prevention, and treatment options are discussed in settings such as churches and barber shops, where socialization, spiritual responsibility, and interdependent cultural norms foster conducive environments.

Wednesday, March 27, 1:15 - 2:45 Erica Watson, Professor, Biology Department, ECSU

2019 Winter Session Schedule

AM Classes 10:15 to 11:45

PM Classes 1:15 to 2:45

Tuesday PM	<p>Mental Health Awareness: Myths and Facts - Jan 15</p> <p>Consciousness after Death - Jan 22</p> <p>The Ugly Side of Cute - Jan 29</p> <p>Employing Threat Assessment Strategies in a Campus Setting - Feb 5</p> <p>The Beginning of Animal Domestication - Feb 12</p> <p>Frankenstein at 200 - Feb 26</p> <p>The Daily Life of a General Surgeon - March 5</p> <p>What Acupuncture Can Do for You - March 19</p>
Wednesday PM	<p>The Pleasure of Debussy's Sound: Space, Color, Imagination - Jan 9</p> <p>Music of the Late Baroque - Jan 16</p> <p>The Long History of Long Walls - Feb 6</p> <p>Moving Beyond Business as Usual: Involving Ethiopian Farmers - Feb 20</p> <p>Hearing in Noise - Wednesday, March 13</p> <p>Religious "Others" in Christian Contexts - March 20</p> <p>Promoting African-American Cardiovascular Health - March 27</p>
Thursday AM PM	<p>Memoir Club - January 3 to March 28</p> <p>Come Close...No, Closer! - Jan 3</p> <p>Public Libraries: Meeting Needs in the Digital Age - Jan 10</p> <p>Quantum Computing - Jan 24</p> <p>The Other Side of Freedom: Gullah Voices and the Ties that Bind - Jan 31</p> <p>The Hidden Brain - Feb 14</p> <p>A Multidisciplinary Approach to Design - February 21</p> <p>Could Stem Cells Be a Fountain of Youth? - Feb 28.</p> <p>The Food Waste Epidemic - March 14</p> <p>An Overview of Hearing Loss - March 21</p>

FIRST CLASS MAIL
U.S. POSTAGE
PAID
STORRS, CT
PERMIT NO. 36

University of Connecticut
Department of Extension / CLIR
W.B. Young Building, Rm 233
1376 Storrs Road, Unit 4036
Storrs, Connecticut 06269-4036

2019 Winter Schedule

Lifelong Learning: CLIR

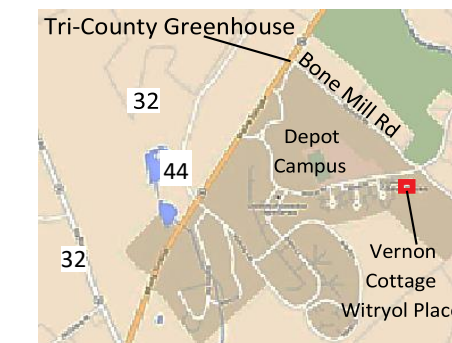
In collaboration with UConn Extension

CLIR's purpose is to provide intellectual stimulus for adults from all walks of life through informal classes and discussions. **There are no academic or age requirements.** Come join us in the Vernon Cottage on UConn's Depot Campus, with free parking and access for the mobility-impaired. (GPS address: Witryol Place, Storrs, CT 06269)

In case of bad weather, CLIR follows the Mansfield Public Schools policy, announced on local radio and TV stations: If they cancel, we cancel; if they have late opening, we cancel morning class; if they have early closing, we cancel afternoon class. If in doubt, contact Mansfield Community Center at 860-429-3015 or the UConn information line at 860-486-3768.

For registration questions ONLY, contact Marilyn Diaz at 860-570-9012 or marilyn.diaz@uconn.edu. For all other questions, email CLIR President Steve Kenton at clirpres@gmail.com.

The CLIR schedule is also available on the Web at <http://clir.uconn.edu>



Multi-Week Class

Memoir Club

Members are encouraged to write memoirs to share in class. New members are welcome.

Thursdays, January 3 to March 28 - 10:15 - 11:45

Facilitators: Christian Davis and Helene Voto, longtime memoirists

Single Classes



Come Close...No, Closer!

Close-up and macrophotography let us see everyday objects in a new light, without a large investment. Learn how to optimize your pictures and how to set up and shoot. Bring your own cameras (and tripod if available) for some hands-on experience.

Thursday, Jan 3, 1:15 - 2:45

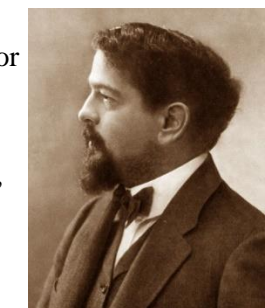
Michael Adams, ECSU Professor Emeritus of Biology

The Pleasure of Debussy's Sound: Space, Color, Imagination

French composer Claude Debussy (1862-1918), known for his inventive approach to harmony and resonance, plays with our sense of space, enriches our experience of harmonic color, and invites us to imagine vivid scenes beyond the music itself. Citing his and other composers' writings, this class explores how he creates unique sound experiences.

Wednesday, Jan 9, 1:15 - 2:45

Timothy Cochran, Professor of Music, ECSU



CLIR Registration Form

A- Name Mr./Mrs./Ms. _____

B- Name Mr./Mrs./Ms. _____

Address _____

City _____ State _____ Zip _____ Phone _____

Email _____

No. of household members _____ x \$20/each = _____ total session fee

Cut along dashed line and mail registration form with your check or money order (payable to **UConn/CLIR**) to:

Department of Extension/CLIR
W.B. Young Building, Rm. 233
1376 Storrs Road, Unit 4036
Storrs, Connecticut 06269-4036

You will receive confirmation by email if you provide an email address.

ONLINE REGISTRATION

<http://www.cahnrcconference.uconn.edu>

PLEASE NOTE: We can notify you of last minute changes to CLIR's schedule only by email. Therefore, if you do not have email, please arrange for a friend who does to keep you abreast of last minute email alerts concerning changes in the CLIR schedule. Thank you.

Single Classes



Public Libraries: Meeting Needs in the Digital Age

We examine the essential role of the public library in society and how libraries are adapting to changes in technology and information access in order to continue meeting the needs of our patrons.

Thursday, Jan 10, 1:15 - 2:45

Emily Tinnel, Outreach Librarian,
Mansfield School and Public Libraries



Mental Health Awareness:

Myths and Facts

We discuss symptoms, diagnosis, medication, myths and facts of mental health issues, and our personal experiences with our son who suffers from bipolar, mood, and anxiety disorders.

Tuesday, Jan 15, 1:15 - 2:45

William Pearsall, president, and Terri Pearsall, secretary/treasurer, NAMI (National Alliance of Mental Illness), Windham County



Music of the Late Baroque

This class explores musical trends circa 1700-1750, through select works of Antonio Vivaldi, J.S. Bach, and George Frideric Handel.

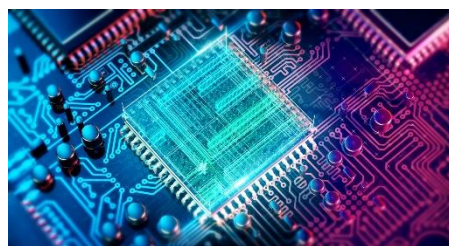
Wednesday, Jan 16, 1:15 - 2:45

Heather Desavage, Adjunct Professor,
Music History, UConn at Avery Point



Consciousness after Death: What the Near Death Experience Means for Our View of the World

Significant numbers of people have survived periods of clinically documented death with no pulse, breath, or measurable brain activity. Many report remarkable experiences of lucid consciousness during that period. If the brain is not producing consciousness in those circumstances, what does this tell us about the nature of consciousness? Tuesday, Jan 22, 1:15 - 2:45
Vincent Woods, retired chiropractor, currently teaching Human Anatomy and Physiology, Quinebaug Valley Community College



Quantum Computing

An introduction to the mysteries and promise of quantum computing, which works with particles that can be in superposition. Such particles represent not bits but qubits, which can take on the value 0, or 1, or both simultaneously. Thursday, Jan 24, 1:15 - 2:45
Susanne Yelin, Professor of Physics, UConn



The Ugly Side of Cute: Anthropomorphism and Conceptual Metaphor

Lisa Fraustino argues that the ubiquitous use of anthropocentric values in children's books—our species chauvinism embedded in anthropomorphism—has obscure ideas that we might not find so cute if they were represented by human bodies. She illustrates her theory by deconstructing the conceptual metaphors in a range of popular picture books.

Tuesday, Jan 29, 1:15 - 2:45

Lisa Rowe Fraustino, Professor and Chair, ECSU English Dept

The Other Side of Freedom: Gullah Voices and the Ties that Bind

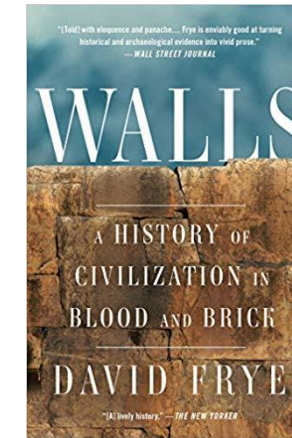
Who are the Gullah? How did their New World community emerge from groups whose African lives were geographically and linguistically different? Ripped from the bosom of their families and brought to the colonies, how did they recreate a sense of belonging and way of life reminiscent of their past, recomposing their memories into a new cultural fabric?

Thursday, Jan 31, 1:15 - 2:45

Robert Stephens, Professor of Music, UConn

Employing Threat Assessment Strategies in a Campus Setting

In accordance with Public Act 13-3, Connecticut universities must have a trained threat assessment team. When utilized properly, a threat assessment team can provide insight into identifying and addressing troubled or threatening behavior in a campus setting. Tuesday, Feb 5, 1:15 - 2:45
Jeffrey Garewski, Chief and Director of Public Safety, ECSU



The Long History of Long Walls

When did communities first start building walls? Have walls always been as controversial as they are today? David Frye speaks on the topic of his recent book "*Walls: A History of Civilization in Blood and Brick.*"

Wednesday, Feb 6, 1:15 - 2:45

David Frye, Professor of History, ECSU

The Beginning of Animal Domestication: A Case from Southwest Asia

Examining animal remains at archaeological sites in northern Israel helps detect when humans first began to control wild goat, cattle and pig populations. Tuesday, Feb 12, 1:15 - 2:45
Natalie D. Munro, Professor of Anthropology, UConn

The Hidden Brain

Most of us think we make our decisions rationally, but studies show that unconscious and sometimes irrational forces drive many of them in everything from what we buy to whom we vote for. Thursday, Feb 14, 1:15 - 2:45
Julie Brown, Professor of Psychological Sciences, UConn

Moving Beyond Business as Usual: Involving Ethiopian Farmers for National Food and Water Security

A major global challenge of today is feeding a fast-growing population with less available water. This is a story of how scientists, farmers and water managers are working together in Ethiopia's Blue Nile region. Wednesday, Feb 20, 1:15 - 2:45
Zoi Dokou, UConn Assistant Research Professor, Civil and Environmental Engineering Dept.

A Multidisciplinary Approach to Design

Some of UConn Extension's new projects in landscape design Thursday, Feb 21, 1:15 - 2:45
Natalie Miniutti, UConn Professor of Plant Science and Landscape Architecture



Frankenstein At 200

This talk looks at the reasons for the enduring popularity of Mary Shelley's 200-year-old novel,

discussing its many dramatic and cinematic adaptation with particular focus on the surprising and complex relationship between Frankenstein and the public health campaign to fight polio in the mid-20th century. Tuesday, Feb 26, 1:15 - 2:45
Dwight Codr, Associate Professor, English Department, UCONN

Could Stem Cells Be a Fountain of Youth?

To initiate an open dialogue about stem cells gauged for the general public, this class covers the different types of stem cells, their applications, and ethics. You are encouraged to present and discuss your perspectives. Thursday, Feb 28, 1:15 - 2:45
Barbara Murdoch, Associate Professor, Department of Biology, ECSU